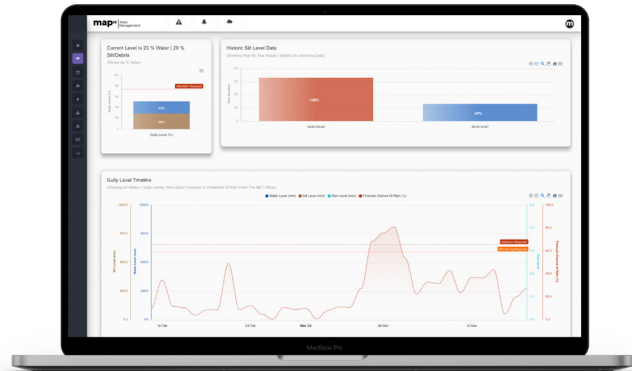


Merton Borough Council Gully Sensor Platform

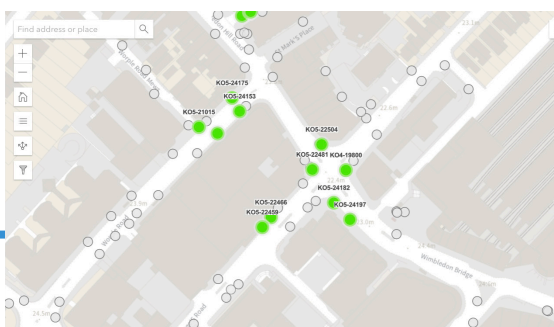


Already users of the map16 system, Merton Borough Council needed a more efficient way to manage their 6000 priority drainage assets. They needed an innovative, proactive maintenance solution to allow them to manage high risk areas as a priority, as a huge amount of financial and human resource was being used to process this.

the Approach

100 IoT gully sensors and 3 rain gauges were installed across Merton, placed in and around high flood risk areas, after Merton's most problematic gullies were identified.

The map16 system used historic data to categorise those gullies most likely to flood, and set specific warnings to notify users when silt and water reach levels that require monitoring and unblocking. Using future weather forecasts, we are able to predict gully reactions to rain events.



the Benefits

As a result of the proactive maintenance model, Merton Borough Council now have the ability to manage high risk drainage assets in the field before a problem arises. Disruption and damage caused by flood water to roads and homes in the area has been reduced, saving the council thousands of pounds per annum. Productivity has increased as crews can navigate directly to high-risk gullies with minimal disruption, resulting in faster reaction times to drainage problems.